

Pattern Reference Guide

Deep Textured Patterns

Rigidized® Metals' deep textured metals are created by a unique process, which enhances the durability and beauty of flat metals. The texturing process can be applied to ALL metals. Patterns here are shown in stainless steel; other materials available include aluminum, carbon steel, copper, brass and titanium. Representations of pattern samples shown in the printout may vary slightly from actual product specifications, pattern sizes, and/or colors. Pattern depth varies with gauge. For additional pattern information and to request samples, please call 800.836.2580

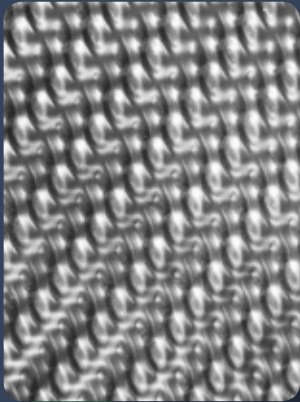
Maximum pattern width available: Patterns are available in various widths and thicknesses. Please refer to the back for technical data.

Maximum pattern width available:

36"

48"

60"



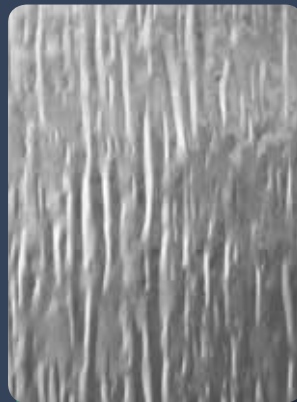
36"

1ACC



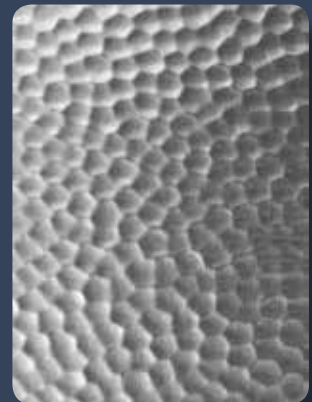
36"

ACC 4i



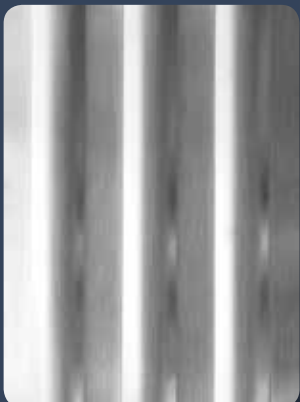
36"

1CS



36"

1HM



36"/48"

1HR



36"/48"

1NA®



36"/48"

1RL



36"/48"

1SLG



36"/48"

1UN



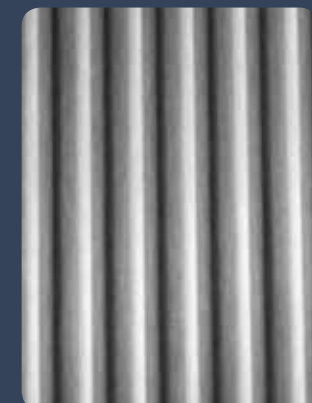
36"/48"

2FL



36"/48"

2WL®



36"/48"

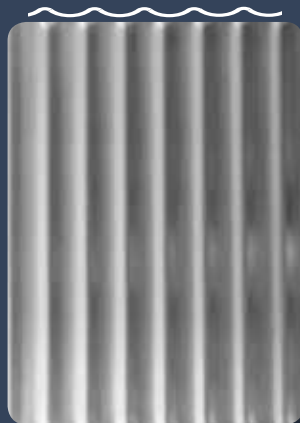
3FL



36"/48" 3ND



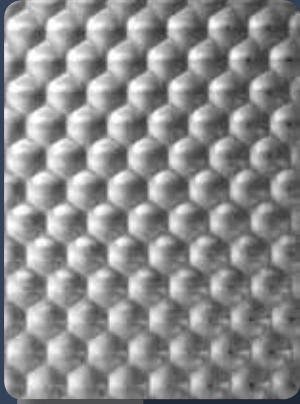
36"/48" 4LB



36"/48" 5HR



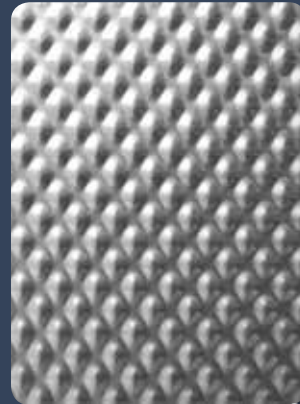
36"/48"/60" 5WL®



36"/48" 6HC



36"/48" 6SL®



36"/48"/60" 6WL®



36"/48"/60" 60LTH

Treadplate

Treadplate

Treadplate

Treadplate



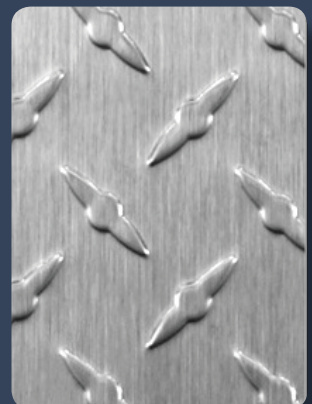
36"/48"/60" RSS.3



36"/48"/60" RTP®



36"/48" STP



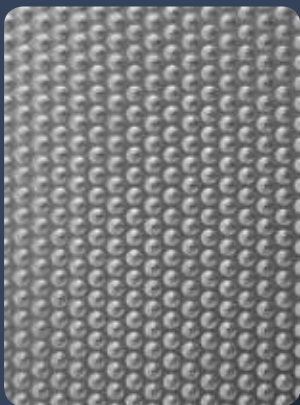
36"/48" XTP

Industrial

Embossed

Embossed

Embossed



48" 7DL



49.21" 3SQ



48" SANDTEX®



49.21" LINEN



Technical Data

available sizes

Pattern	Max Width	Stainless Steel Thickness	Other Metal Thickness: Carbon Steel, Copper, Aluminum, Brass, etc.
1ACC	36"	0.018" - 0.125"	0.018" - 0.125"
ACC 4i	36"	0.018" - 0.125"	0.018" - 0.125"
1CS	36"	0.018" - 0.075"	0.010" - 0.080"
1HM	36"	0.018" - 0.036"	0.010" - 0.062"
1HR	36" / 48"	0.048" - 0.060"	0.048" - 0.062"
1NA®	36" / 48"	0.018" - 0.075"	0.010" - 0.090"
1RL	36" / 48"	0.018" - 0.120"	0.018" - 0.125"
1SLG	36" / 48"	0.018" - 0.048"	0.010" - 0.062"
1UN	36" / 48"	0.018" - 0.120"	0.018" - 0.125"
2FL	36" / 48"	0.024" - 0.120"	0.020" - 0.125"
2WL®	36" / 48"	0.018" - 0.036"	0.008" - 0.032"
3FL	36" / 48"	0.018" - 0.060"	0.010" - 0.062"
3ND	36" / 48"	0.018" - 0.036"	0.024" - 0.040"
4LB	36" / 48"	0.018" - 0.060"	0.010" - 0.090"
5HR	36" / 48"	0.024" - 0.060"	0.025" - 0.062"
5WL®	36" / 48" / 60"	0.018" - 0.075"	0.008" - 0.075"
6HC	36" / 48"	0.024" - 0.105" / 0.120" max 36" wide	0.024" - 0.125"
6SL®	36" / 48"	0.018" - 0.048" / 0.060" consult factory for max width	0.024" - 0.125"
6WL®	36" / 48" / 60"	0.018" - 0.120"	0.008" - 0.125"
60LTH	36" / 48" / 60"	0.018" - 0.075"	0.010" - 0.090"
LINEN*	49.21"	0.029" - 0.075"	N/A
SANDTEX®*	48"	0.036" - 0.060"	N/A
3SQ*	49.21"	0.029" - 0.075"	N/A
RSS.3	36" / 48" / 60"	0.029" - 0.120"	0.036" - 0.125"
RTP®	36" / 48" / 60"	0.018" - 0.120"	0.010" - 0.125"
STP	36" / 48"	0.075" - 0.105"	0.080" - 0.100"
XTP	36" / 48"	0.024" - 0.075"	0.024" - 0.080"
3.QLT	48"	0.024" - 0.029"	0.024" - 0.032"
Square	44"	0.029"	0.032" **
Diagonal	45"	0.029"	0.032" **
Checkerboard	44"	0.029"	N/A
Harlequin	45"	0.029"	N/A
Diamond	45"	0.029"	0.032" **
Mosaic	45"	0.029"	N/A



3.QLT | 4.QLT | 6.QLT

SQUARE



DIAGONAL

CHECKERBOARD



HARLEQUIN

DIAMOND



MOSAIC

Standard Lengths: 96", 120", 144"

*Only available in Bright Annealed finish
**Only available in Aluminum and Copper

7DL in 2B finish, only

Custom sizes are always welcome.

Please phone customer service for specific finish, pattern specifications, non-standard sizes, technical information and free samples.

Rigidized® Metals Corporation | 658 Ohio Street | Buffalo, New York 14203 | USA
TOLL FREE 800.836.2580 | P 716.849.4760 | FAX 716.849.0401 | www.rigidized.com

Rigidized®, Rigid-TEX®, 1NA®, 2WL®, 5WL®, 6SL®, 6WL®, RTP® and Sandtex® are registered trademarks. ©2016 by Rigidized® Metals Corporation 10/16

Metals Textured Include:
Stainless Steel, Copper, Aluminum, Brass, Titanium, Bronze, Steel, Perforated, Galvanized and Galvannealed.

